



WELCOME!

Autumn Breeze Apartments is the most desired and affordable community at the heart of Lewisville, Texas. Bordered by I-35E and HWY 121, it grants quick access to the cities of Irving, Denton, The Colony, Coppell, and Grapevine as well as a myriad of fine dining, shopping, entertainment and Lewisville ISD.

This stunning lifestyle hosts a pet-friendly community with large inviting homes, high-end amenities and renovated apartment features* that is just 15 minutes from DFW International Airport and so much more!

Once you take a tour and meet our professional and friendly staff, you will be ready to call Autumn Breeze your **home**.

COMMUNITY AMENITIES

- 15 minutes away from DFW International Airport
- 24-Hour emergency maintenance
- Business center
- Close to fine dining, great shopping and entertainment venues
- Fitness center
- On Lewisville ISD school bus route
- On-site laundry facilities
- Pet-friendly community with on-site dog park
- Picnic areas with outdoor grills
- Quick access to major thoroughfares
- Resort-style swimming pools
- Sports court

APARTMENT FEATURES

- All-electric kitchen appliances
- Black appliances*
- Ceiling fans*
- Dishwashers
- Entry-way and linen closets*
- Fire stoppers
- Garbage disposals
- Granite counter tops*
- Microwaves*
- Pass-through bars
- Patios/balconies with outside storage
- Spacious walk-in closets
- Stand-up master showers*
- Washer and dryer connections*
- Wood-burning fireplaces*

ALL SQUARE FOOTAGE IS APPROXIMATE AND IS SUBJECT TO CHANGE. APARTMENT FEATURES MAY VARY BY UNIT. *ONLY IN SELECT UNITS



DIRECTIONS: TAKE I-35E N. TO TX-121 BUS. TAKE EXIT 450 AND TURN LEFT ON TX-121 BUS. FOLLOW TX-121 BUS. TO OAK KNOLL CIRCLE. WE ARE LOCATED ON THE RIGHT BEFORE W. SOUTHWEST PKWY.

1679 S State Highway 121
Lewisville, TX 75067
TEL (972) 221-4614
FAX (972) 436-0956

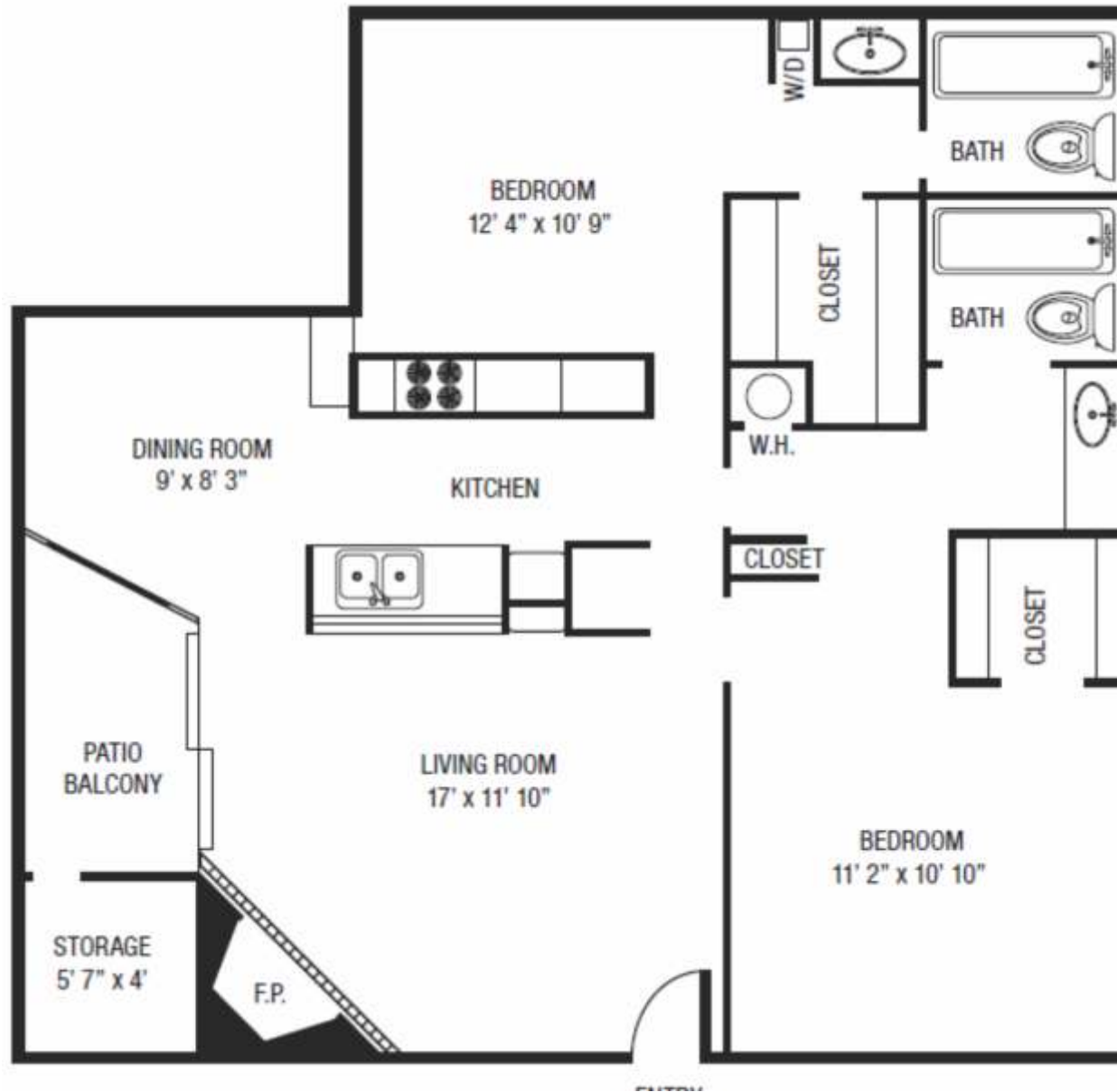
E info.autumn breezeapartments@wmci.biz
WWW.AUTUMNBREEZELEWISVILLE.COM



AUTUMN
BREEZE
APARTMENTS



PET FRIENDLY



Autumn Breeze B3

Two Bedroom, Two Bath
1,000 Square Feet*

*All square footage is approximate only