



## WELCOME!

Autumn Breeze Apartments is the most desired and affordable community at the heart of Lewisville, Texas. Bordered by I-35E and HWY 121, it grants quick access to the cities of Irving, Denton, The Colony, Coppell, and Grapevine as well as a myriad of fine dining, shopping, entertainment and Lewisville ISD.

This stunning lifestyle hosts a pet-friendly community with large inviting homes, high-end amenities and renovated apartment features\* that is just 15 minutes from DFW International Airport and so much more!

Once you take a tour and meet our professional and friendly staff, you will be ready to call Autumn Breeze your **home**.

## COMMUNITY AMENITIES

- 15 minutes away from DFW International Airport
- 24-Hour emergency maintenance
- Business center
- Close to fine dining, great shopping and entertainment venues
- Fitness center
- On Lewisville ISD school bus route
- On-site laundry facilities
- Pet-friendly community with on-site dog park
- Picnic areas with outdoor grills
- Quick access to major thoroughfares
- Resort-style swimming pools
- Sports court

## APARTMENT FEATURES

- All-electric kitchen appliances
- Black appliances\*
- Ceiling fans\*
- Dishwashers
- Entry-way and linen closets\*
- Fire stoppers
- Garbage disposals
- Granite counter tops\*
- Microwaves\*
- Pass-through bars
- Patios/balconies with outside storage
- Spacious walk-in closets
- Stand-up master showers\*
- Washer and dryer connections\*
- Wood-burning fireplaces\*

ALL SQUARE FOOTAGE IS APPROXIMATE AND IS SUBJECT TO CHANGE. APARTMENT FEATURES MAY VARY BY UNIT. \*ONLY IN SELECT UNITS



**DIRECTIONS:** TAKE I-35E N. TO TX-121 BUS. TAKE EXIT 450 AND TURN LEFT ON TX-121 BUS. FOLLOW TX-121 BUS. TO OAK KNOLL CIRCLE. WE ARE LOCATED ON THE RIGHT BEFORE W. SOUTHWEST PKWY.

1679 S State Highway 121  
Lewisville, TX 75067  
TEL (972) 221-4614  
FAX (972) 436-0956

E [info.autumnbreezeapartments@wmci.biz](mailto:info.autumnbreezeapartments@wmci.biz)  
WWW.AUTUMNBREEZELEWISVILLE.COM

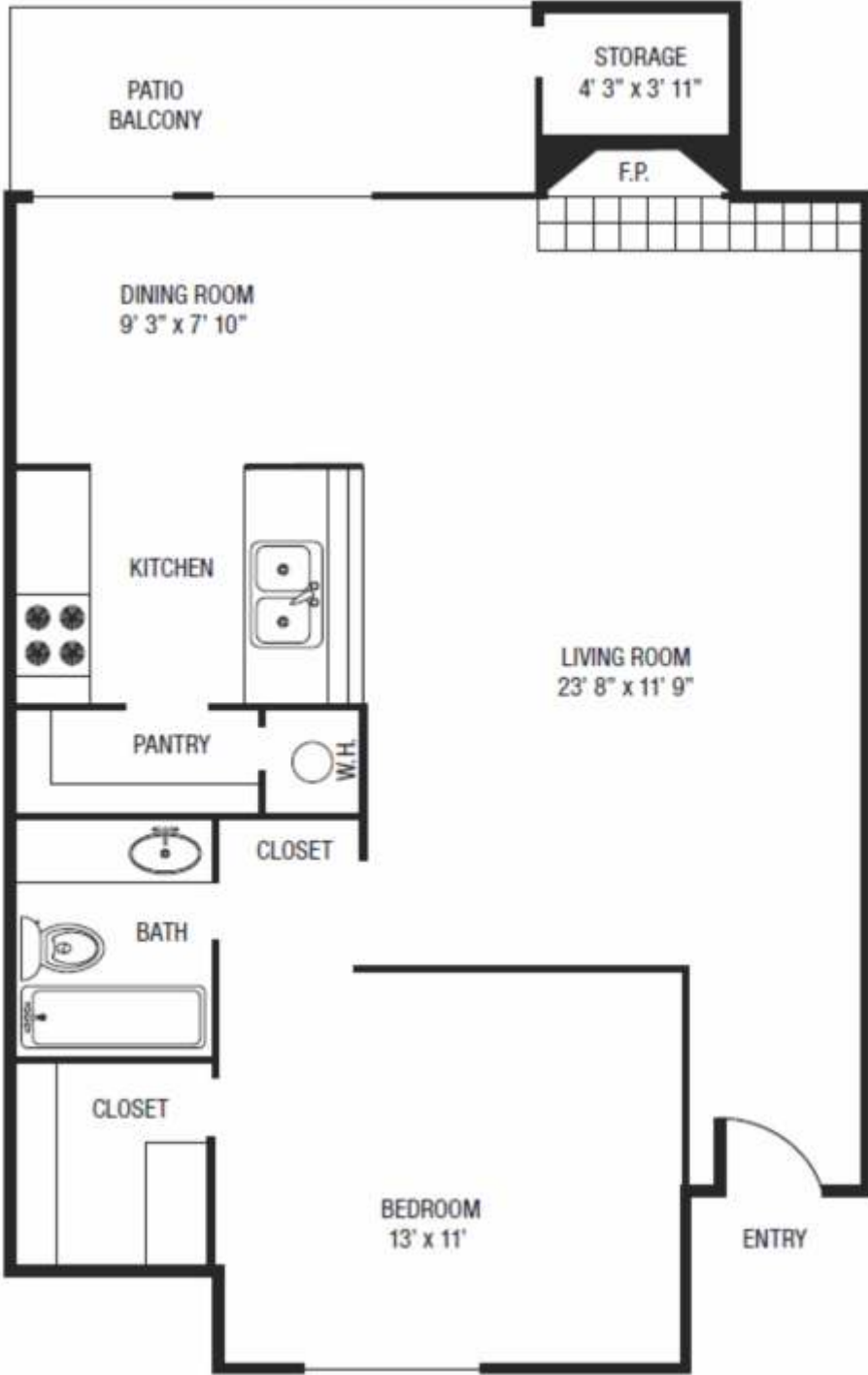


AUTUMN  
BREEZE  
APARTMENTS



EQUAL HOUSING  
OPPORTUNITY

PET FRIENDLY



**Autumn Breeze A2**

One Bedroom, One Bath  
750 Square Feet\*

\*All square footage is approximate only